



"SRUV"

**SECURITY / RESPONSE
UTILITY VEHICLE**

**A JOINT OFFERING FROM GAITHERSBURG EQUIPMENT, GSA CONTRACTOR
FOR THE KAWASAKI MULE, AND ESSEX MANUFACTURING UTILITY VEHICLE ACCESSORIES**



**Essex Manufacturing transforms the 4x4 Kawasaki Mule Utility Vehicle into a
Lightweight, Multipurpose, All-Terrain Security / Response Utility Vehicle tailored to the
needs of Security, Emergency Response and Civil Support Units.**

The 3010 Kawasaki Mule:

Built more like a small gauge truck than other Utility Vehicles, the 4wd Mule is the most powerful, reliable and adaptable platform for conversion into a true workhorse for both on & off-road environments; Powered by either a 620cc Gasoline or a 953cc Diesel motor, the Mule has a top speed of 25 mph, governed. It features Rack & Pinion Steering, Automatic torque converter, Hi-Lo range and a locking rear differential; McPherson Struts for Independent front suspension, Semi-independent Rear axles, Shocks, Coil & Leaf springs; A steel cargo bed with folding tailgate, 1100 lb bed load.



The Base Essex SRUV Outfit includes:

Choice of Kawasaki Aztec Red or Hunter Green for the Mule and Accessories; [Optional Cloud White, Olive Drab or Desert Tan conversions are available with Essex factory installation] Enclosed Cab: Essex' trademark *Lift Glass Windshield* and *Sliding Glass Rear window* for excellent visibility and ventilation. Wide *Lift off steel doors* provide 4-way airflow that makes an Essex cab practical even in hot climates. A 17,500 Btu liquid core heater and cooling-defrost fan circulate air for comfort; Interior dome light, Closeout kit for sound reduction, a molded floor mat, rearview and exterior mirrors. A Hi-Capacity Sealed battery; In dash Fuel Gauge, Backup alarm, Turn signals, 12v Power ports; Improved Suspension and Essex "Surefoot" Kevlar belted All-terrain tires for increased ground clearance, improved ride & handling, offroad all season traction and runflat performance; A customized light bar with flashing strobes, takedown & alley lights with in-cab console; PA Siren & 100W Spkr.r An extended 58" L x 52" W bed for cargo; plus Removable Bed Rails, a portable Bed Seat & Bed Access Step.

Additional Options include:

Essex Factory Color Conversions; Gun mounts; Street Radial & Turf Tire Kits; 3500# Winch with Remote Control, High Output alternator, Reinforced Footlocker, Body protecting Bumper, Grille Guard, CV Joint Guards and an Engine Skid Plate; Polyurethane Bed Liner, Unity Spotlights, 68" length bed; 115 Gal Skid Fire control unit with two hoses, 22 gpm output and metered foam induction.

To Order the Kawasaki Mule with Essex SRUV features:

Contact Essex for a participating GSA Advantage Contractor or an authorized dealer.
Visit our website or call with custom requests and to tailor configurations for individual requirements.



"SRUV"

**SECURITY / RESPONSE
UTILITY VEHICLE**

OPTIONAL EQUIPMENT



UWZ3500: The 3500# Warn winch matches the Mule's payload. Includes the roller fairlead and a 12' hand held remote control



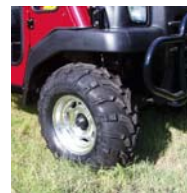
The 50" x 15" x 11" **Footlocker** has a reinforced top that lets it double as a seat or attendant station. The portable **Bed seat** attaches to the side rail and lifts out as a convenient auxillary seat. Made from Lightweight aluminum the frame supports the comfortable 40x16" seat cushion and allows for underseat storage.



27BFS: For best off-road performance in mud, snow and rock choose the 27" SUREFOOT Kit. This 6 ply tire has been designed and tested for heavy utility vehicles like the Mule. It features a KEVLAR belt for puncture protection, 1150 lb load rating, heavy sidewalls for safe traversing and 1 1/8" lugs that eat up terrain yet run fairly smooth on hard surfaces. 27-9-12 Front, 27-11-12 Rear. Not recommended on Pavement.

26BFS: Standard For General use with mixed on & off-road travel, choose 26" SUREFOOT Tires. This 6 ply 26-10-12 tire on all four wheels is patterned after the popular 489 tread style with it's medium sized 5/8" lugs. Like the 27" it features a Kevlar belt, 1150 lb load rating and reinforced sidewalls to provide dependable ride and medium traction performance. It also provides a smoother hard surface ride.

26BFMT The 26-12-12 Multitrac on front & rear is a 6 ply Commercial Turf tire that provides an Excellent ride, increased clearance and 20% more ground speed. It is the best solution for street and turf use. This tire is very stable, wears well on pavement and has a light footprint on fragile turf.



Desert Tan & 3000EX20



White & 3000EX20



Olive Drab LATTV



3000CC: OD Cargo Cover, Van Doors

Options for carrying additional cargo include the 20" Bed Extension and the Cargo Cover.

3000EX20: Extend the bed to 68" length for increased capacity.

3000CC: The 58" long Cargo Cover has Double rear doors and inside height of 36."



WILDFIRE CONTROL SPRAYER FOR THE KAWASAKI MULE

The Essex Wildfire Control Spray System is designed for optimum capacity and performance with the Kawasaki Diesel Mule. The skid mounted apparatus features a 115 gallon tank, 22 gpm pump, 140 psi, and two hoses, 1/2" and 3/4", with spray guns that can project a straight stream up to 50 feet or fan to a cone for wide coverage.

The optional foam induction system multiplies the effectiveness by up to seven-fold. The metered valve unit allows you to control the percentage of foam concentrate for maximum effect.

Handle the load safely and surely with Essex Kevlar belted Bigfoot kits on your Vehicle. The unit can also be skid mounted in pickups with standard beds.